

hole for
bowsprit
(cut out)

Stem

Bulkhead1

Bulkhead 3
(aft side)

Hull (inside)

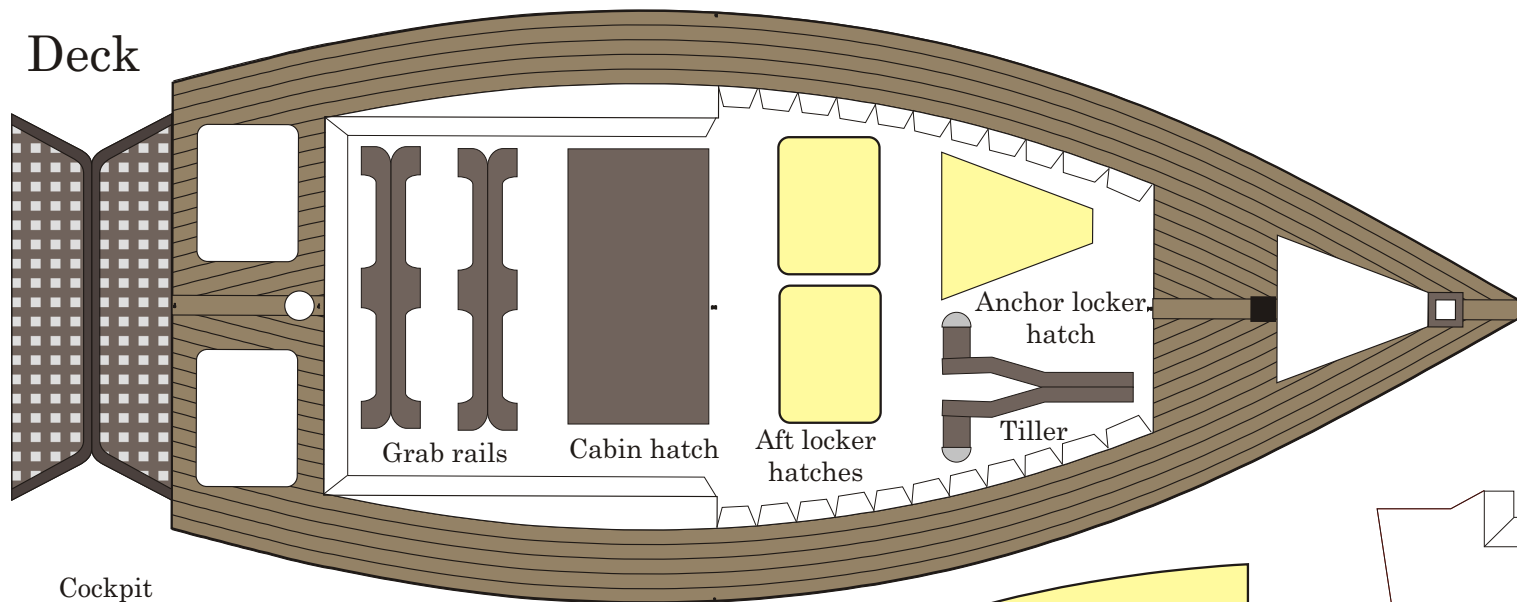
Transom (outside)

Bottom panel

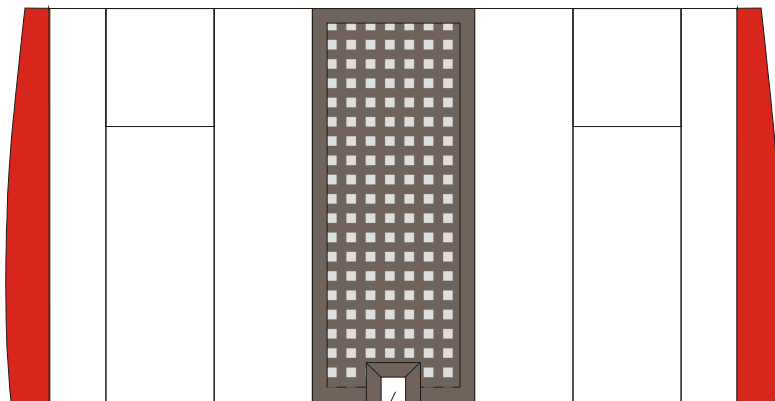
Bulkhead 2 (cockpit side)

EGOIST papermodel
scale 1/30

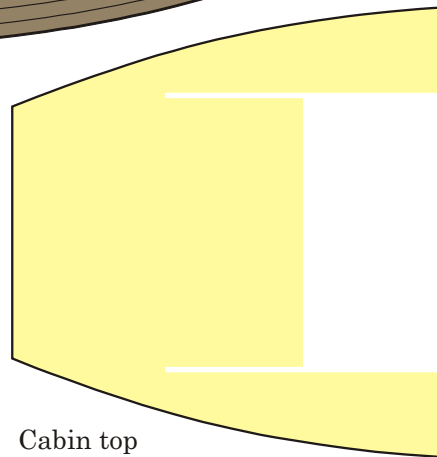
Deck



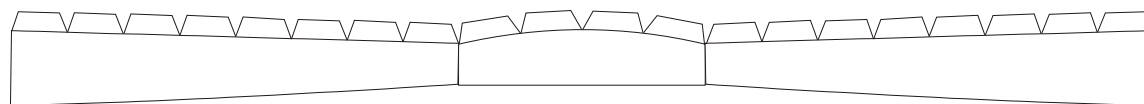
Cockpit



Hole for main mast

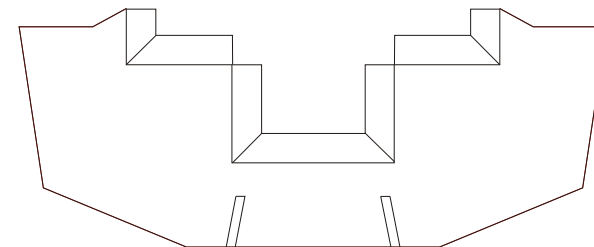


Cabin top

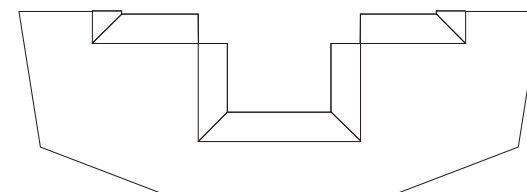


Cabin front and sidewalls

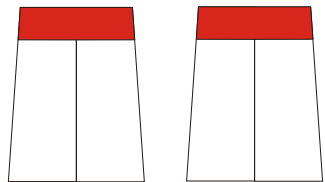
Cockpit fore frame



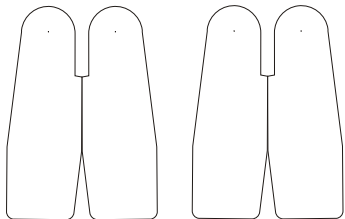
Cockpit aft frame



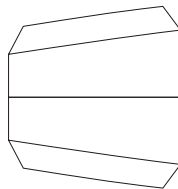
EGOIST papermodel
scale 1/30



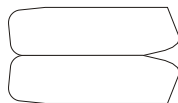
Rudder boxes



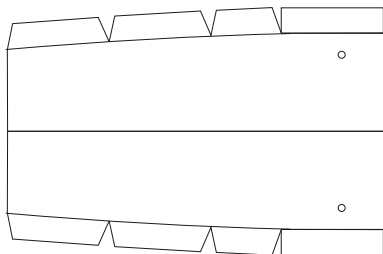
Rudder blades



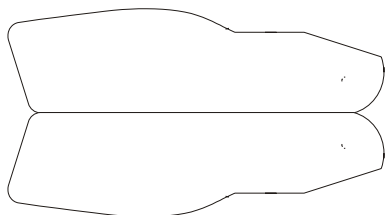
Aft board trunk



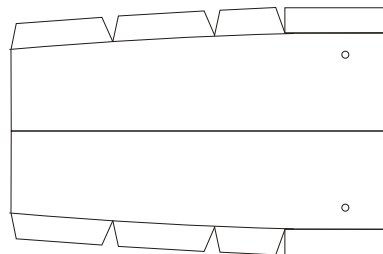
Aft board



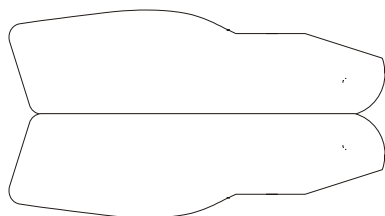
Fore board trunks



Fore boards



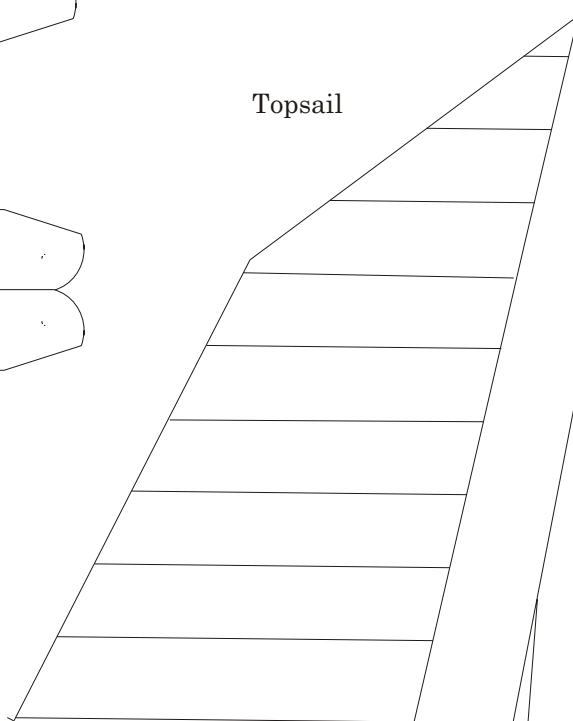
Fore board trunks



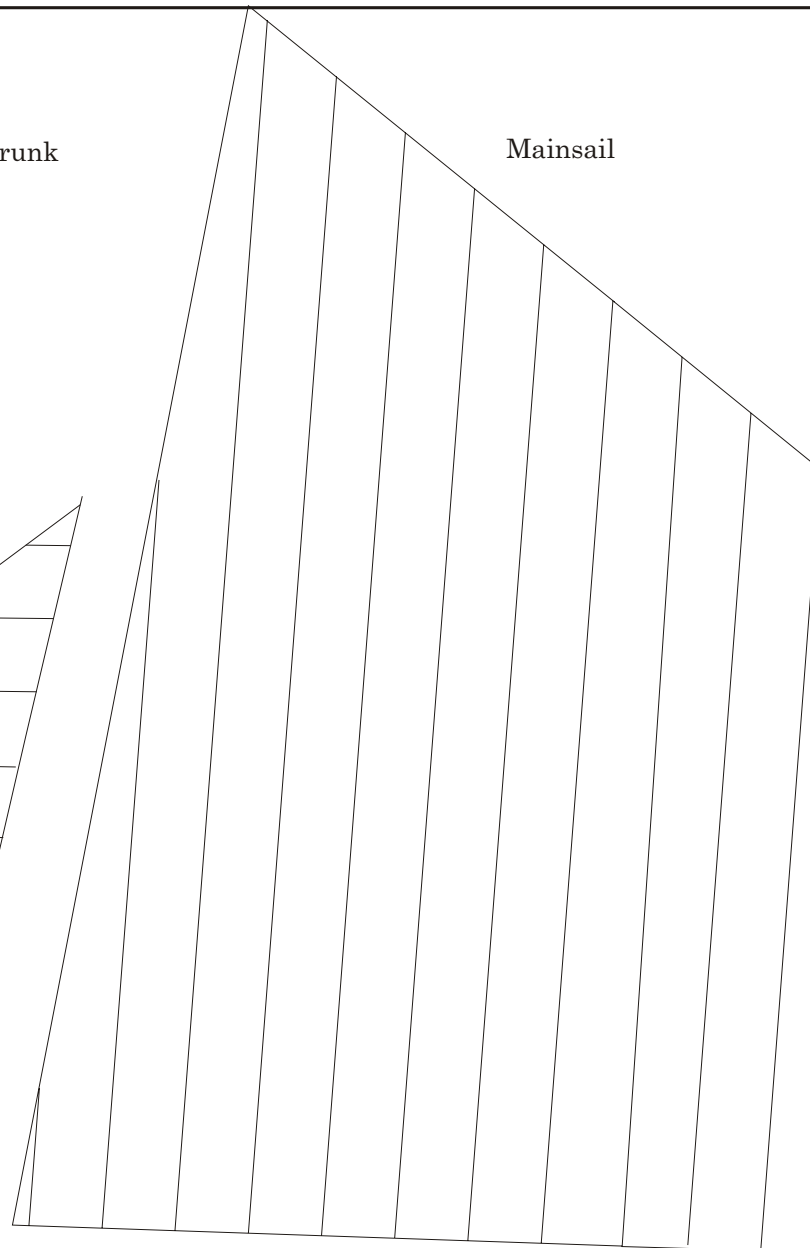
Fore boards



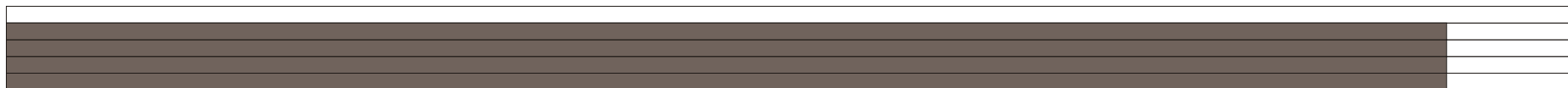
Keel stumps



Topsail



Mainsail



Main mast



Mainsail spar

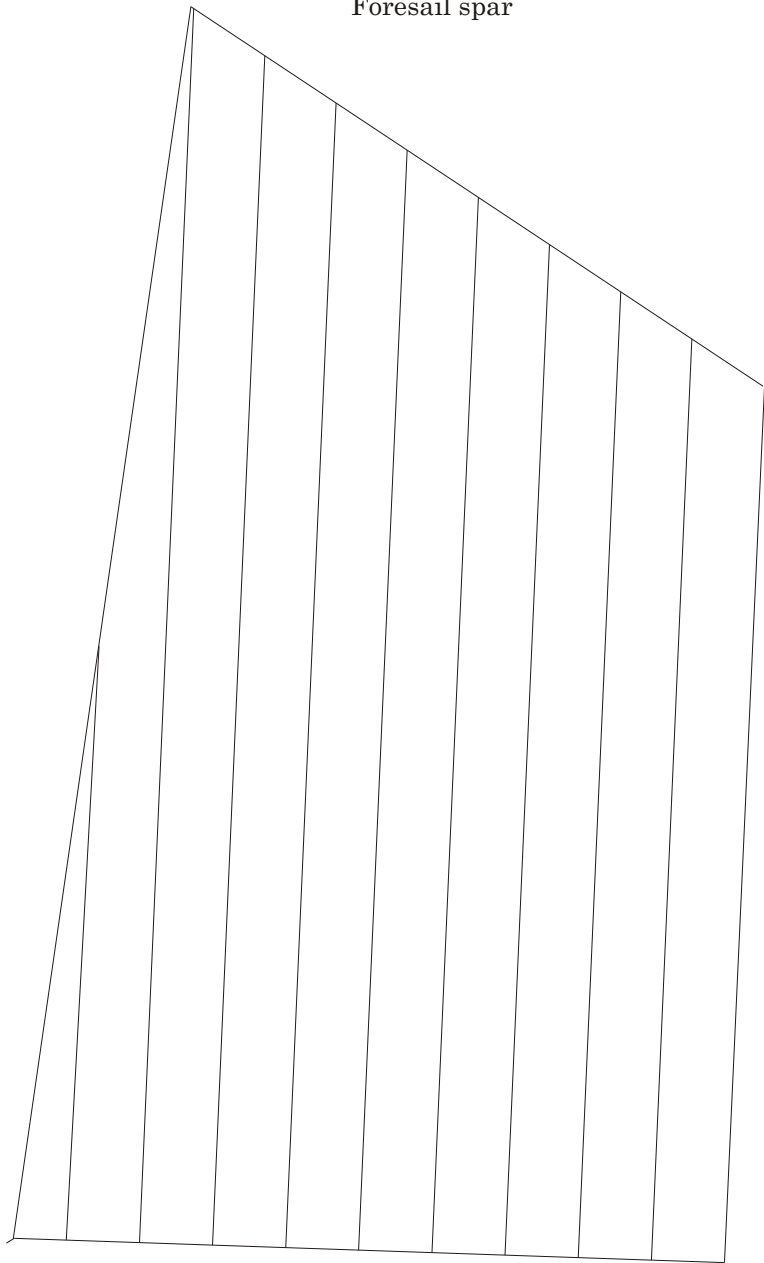


Topsail spar

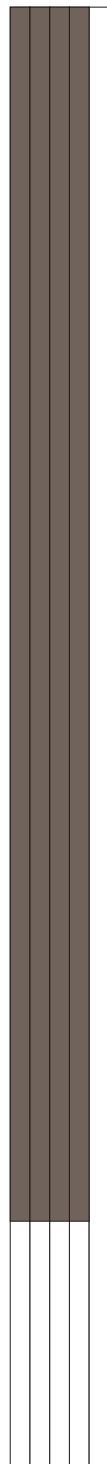
EGOIST papermodel
scale 1/30



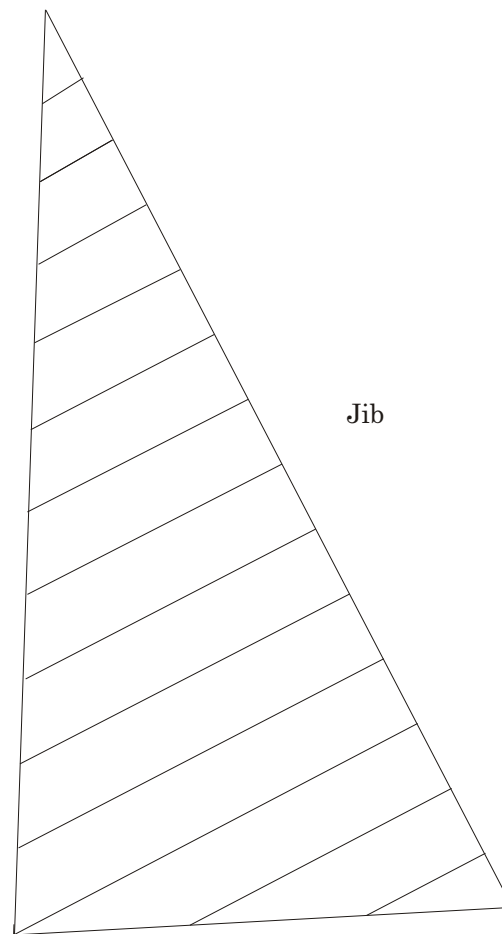
Foresail spar



Foresail



Fore mast



Jib



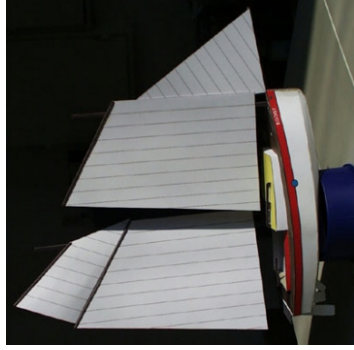
Bowsprit

Junk sails

Draw these lines
on the other side
of the sails

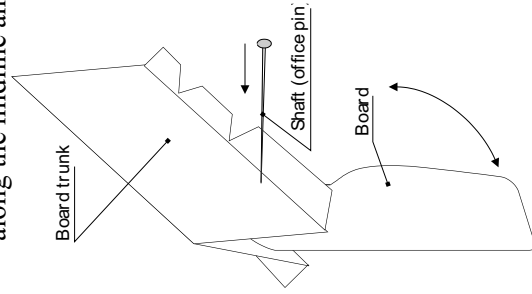
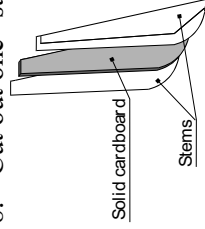
EGOIST papermodel
scale 1/30

HOW TO BUILD THE



paperEGO

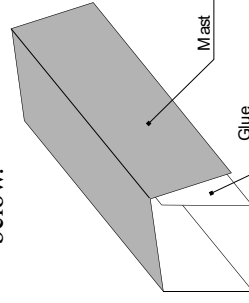
1. Print out all the sheets with drawings on 160 or 200 g/sqm paper
2. Cut out the “hull “ and the “bottom panel”.
3. Glue the “bottom panel” on the hull’s outside bottom
4. Cut out the holes for bowsprit and the appendixes (boards).
5. Fold the panels of the hull and the gluing tabs along the marked lines (chines).
6. Glue the tabs and attach the panels starting from bow to stern and from bottom to upper panels.
7. Fold and glue the transom.
8. Cut out one “stem” and glue it on a solid piece of cardboard, then cut it to the stem’s shape. Cut out the other “stem” and glue it on the other side of the cardboard as in the drawing.
9. Glue the stem at it’s place, following the lines marked on it.
10. Cut out the “foreboards”and “aftboard”, fold them along the midline and glue them.



11. Cut out the “board-trunks”, fold them, and attach the boards as shown below.
12. Glue the board assemblies on their places inside the hull and check if they work. Adjust if needed.
13. Cut out the “bulkheads” and glue them on a piece of solid cardboard. Cut again, cut the slots for board assemblies on bulkhead 2 and 3. Fit the bulkheads at their places

marked on the hull and glue them.

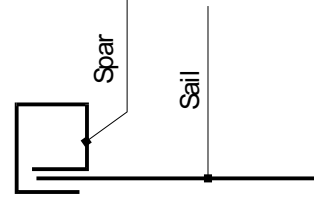
14. Cut out the parts for cockpit, fold them along the lines. Fold the gluing tabs of the two “cockpit frames” and glue the frames to the “cockpit”.
15. Fit the whole cockpit assembly into the hull
16. Cut out the “deck”, fold and glue the two faces of the aft platform, cut out te hole for the foremast, fold the tabs on the hull sheer and glue the deck to it.
17. Cut out the two red stripes and glue them on the hull aligned to the sheer.
18. Cut and glue the “transom” on the hull.
19. Cut out the “cabin sidewall” and fold it. Fold the gluing tabs on the deck and glue the cabin at it’s place. Trim if necessary at the aft end.
20. Cut out the “cabin top”, fold the tabs on the cabin upper edge and glue the cabin top in place.
21. Glue the edges of the cockpit coamings and attach them to the deck.
22. Cut out the hatches and glue them on their positions.
23. Cut out the tiller fold and glue it in place
24. Cut out the rudders and rudderboxes, fold and glue them the same way as the boards. Then glue them to the transom on the marked lines.
25. Make the two keel stumps in the same way you made the stem, and glue them on the hull bottom following the marked lines.
26. Make the masts and bowsprits by cutting and folding them into a square section as shown below.



27. Insert the masts and bowsprit through their holes and glue them .

28. Cut out the sails and their spars. Make the spars in the same way as the masts and glue them to the sails upper edge.

29. Glue the sails on the masts. For the jib, use two drops of glue, one on the bowsprit and one on the mast.



The boat is ready, put it on a stand and enjoy it!

**For any more information just e-mail at
copyplus@netsoft.ro**

Fair winds!